

# South Canterbury schools



## SC branch NZ Society of Genealogists

### ***SOUTH CANTERBURY SCHOOLS***

We have admission records for the following local schools. Indexes for most schools are at the SC museum. For records, contact us at [SouthCanterbury@genealogy.org.nz](mailto:SouthCanterbury@genealogy.org.nz) or fill in one of the forms available on the website or at the museum. As a branch of the NZSG we are restricted from publishing information about living persons, and so require confirmation of death of any person who entered school after 1920 (strictly speaking, 95 years before the date of the request). A copy of the death entry on the BDM website <https://bdmhistoricalrecords.dia.govt.nz/Home/> is sufficient. Records held by SC Branch NZSG at SC Museum unless otherwise stated. Accession numbers relate to SC NZSG library.

School: **ADAIR**

Years open: 1887-1933

Records held: Archives NZ, Christchurch

Publications: Adair notes (includes names of allotments 1883 & some school reports) DH132

Notes: Committee minute books 1888-1908 and 1909-1932 at Archives NZ, Christchurch



**Adair  
1892**

School: **ALBURY**

Years open: 1882 - present

Records held: 1882-1950

Publications: 1882-1982 From Te Ngawai, Mt Nessing, Chamberlain, Monavale to Albury DH91  
1882-2007 125<sup>th</sup> Jubilee DH101



School: **ALL HALLOWS CATHOLIC, GERALDINE**

Years open: 1945-1973

Records held: 1945-1973

Publications: Geraldine 1862-1962: A centenary of schooling DH25

Notes: Sisters of Mercy were asked to teach at a new school which was opened in 1945 near the Geraldine Church. The local priest, Father Fogarty, transported children from outlying areas to school every day. The school was closed in 1973 when the roll became too small. <http://www.mercyschools.org.nz/mercy-schools/timaru-schools/all-hallows-school-geraldine/>



School: **ALLANDALE**

Years open: 1909-1938

Records held: 1909-1938

Publications: Aspects of Allandale (contains school roll)  
Compilation of local material DH85



Notes: In 1909, the first school opened in an old white house across the Allandale Creek, and ran there until the new school, built on land donated by James Wilson of Allandale Station, opened in 1911. The Allandale School was also attended by children from Skipton, Raincliff and Trentham. Transport appears to be the main reason for the closing of the smaller schools in the districts surrounding Fairlie. Allandale School was the first to close in 1939. [www.allandalehall.co.nz/history](http://www.allandalehall.co.nz/history)

**School:** ALTON HOUSE PRIVATE SCHOOL FOR GIRLS  
**Years open:** 1891-1896  
**Records held:** None  
**Notes:** Moved from Elizabeth St into a new building on the corner of Sefton and Sarah sts in May 1895. Timaru Herald 18 May 1895

**School:** AROWHENUA MAORI  
**Years open:** 1895 - present  
**Records held:** None  
**Publications:** Deeds Not Words - Mahia nga mahi, kaua he korero (1895-1965)  
Centennial 1895-1995: Deeds Not Words - Mahia nga mahi, kaua he korero DH26  
**Notes:** Aka Tarahaoa. New school opened 1951.



**School:** ARUNDEL  
**Years open:** 1890-1966  
**Records held:** 1891-1965  
**Notes:** Pupils transferred to Orari Bridge School in 1966.

**School:** ASHTON HOUSE, TEMUKA  
**Years open:** 1890-1894  
**Rolls held:** None  
**Notes:** Miss Wethey's Private School, Temuka. Known to be open 1895-1898

**School:** ASHWICK FLAT  
**Years open:** 1892-1942  
**Records held:** 1892-1942  
**Publications:** Fairlie & District Schools DH85  
**Notes:** Consolidated on Fairlie School in 1942.



**School:** BARTON RURAL  
**Years open:** 2005-present  
**Notes:** Merger of Fairview and Claremont schools



**School:** BEACONSFIELD  
**Notes:** Opened 1997 as a consolidation of Southburn & Pareora West  
Re-established 2005 to include Salisbury School



**School:** BELFIELD  
**Years open:** 1884-1927  
**Records held:** No records  
**Notes:** Register not located; opened 30 June 1884; closed 01.06.1926 or 1927.  
(Macdonald's old Orari Station lay just east of Belfield settlement.)

School: **BLACKBURN** see Southburn



School: **BLUE CLIFFS**

Years open: 1910-1992

Records held: 1910-1968

Publications: Blue Cliffs School and district (contains school roll) DH83

School: **BLUESTONE**

Years open: 2005 - OPEN

Rolls held: None

Notes: Merger of Timaru Main and Timaru West, on West site. Took in many students from Watlington Intermediate.



School: **BURKES PASS**

Years open: 1879-1943

Records held: 1883-1943

Publications: Fairlie & District Schools DH85

Notes: Consolidated on Fairlie 1944. Population drift to Fairlie saw the roll sink to nine in 1913 and the school close at the end of the year. It re-opened in March 1920 with 12 pupils but its existence was precarious, closing permanently in 1943. Pupils transferred to Kimbell School, consolidating on Fairlie in 1946.



School: **CANNINGTON**

Years open: 1891 - present

Records held: 1909-1985

Publications: Pleasant Point District Schools: Consolidation . . . ; Pleasant Point Schools, Pleasant Point St Joseph's, Cannington, Upper Waitohi DH95



School: **CATTLE CREEK**

Years open: 1927-2004

Records held: None

Publications: 1927-1977 The First 50 Years McNicholl collection

Notes: in Waitaki Valley [Otago Education Board]



School: **CAVE**

Years open: 1889-1937

Records held: 1889-1937

Publications: Pleasant Point 1868-1968, a Centenary of Schooling DH59

Pleasant Days, a History of Public Education in Pleasant Point district DH60

Notes: Pupils to Pleasant Point in 1943



School: **CHAMBERLAIN**  
Years open: 1904-1937  
Records held: 1904-1937  
Publications: 1882-1982 From Te Ngawai, Mt Nissing, Chamberlain and Monavale to Albury  
1882-2007 125<sup>th</sup> Jubilee DH91; DH101  
Notes: Opened 1904 (1902?); consolidated on Albury 1938



School: **CLANDEBOYE**  
Years open: 1900-2004  
Records held: 1928-2003  
Publications: Temuka District Schools: Temuka, Clandeboye (& Orton), Milford, Waihi Boys' Preparatory DH93  
Notes: Merged with Temuka

School: **CLAREMONT**  
Years open: 1878-2004  
Records held: 1878-2004  
Publications: Golden Days Carol Bell collection  
Centennial Story Pt2 Looking Back Carol Bell collection  
Claremont School & Fairview School DH84  
Heart of a Community - Claremont School 1878-2003 DH98  
Notes: Merged with Fairview, became Barton Rural

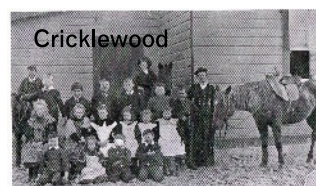


School: **CRAIGHEAD DIOCESAN**  
Years open: 1911 - present  
Records held: None  
Publications: School list 1911-1986 McNicholl collection



School: **CRAIGMORE**  
Years open: 1931-1942  
Records held: 1931-1942  
Publications: Temuka District Schools: Temuka, Clandeboye (& Orton), Milford, Waihi Boys' Preparatory DH93,  
Heart of a Community: Claremont School 1878-2003 DH98  
Notes: Also known as Longridge

School: **CRICKLEWOOD**  
Years open: 1898-1947  
Records held: 1898-1947  
Publications: Fairlie & District Schools: Fairlie (Fairlie Creek), Fairlie DHS, Allandale, Ashwick Flat, Burkes Pass, Cricklewood, Kimbell/Silverstream, Sherwood Downs, Skipton; Haldon Station DH85  
Notes: Consolidated on Fairlie



School: **DOUGLAS**  
Years open: 1911-1952  
Records held: None  
Notes: Pupils went to Waihao Downs; also known as Upper Ferry

School: **ELMSDALE PRIVATE SCHOOL**  
Years open: 1919-1940  
Records held: None  
Notes: School for "problem boys" on the site of what is now the Selwyn Motor Camp

School: **ESK VALLEY**  
Years open: 1878-1975  
Records held: 1881-1975  
Publications: Esk Valley School (folder compilation) DH96  
Notes: aka Upper Otaio

School: **FAIRLIE PRIMARY**  
Years open: 1879 - present  
Records held: 1879-1955  
Publications: Fairlie & District Schools DH85  
Notes: aka Fairlie Creek



School: **FAIRLIE DHS**  
Years open: 1922- present  
Records held: 1922-1947  
Publications: 1879-1954 75<sup>th</sup> Jubilee McNicholl collection  
1879-1964 85<sup>th</sup> Jubilee The Past 10 Years  
1879-1979 Fairlie 100 & contributing schools Carol Bell  
1879-2004 125<sup>th</sup> Jubilee McNicholl collection  
Notes: aka Mackenzie College




School: **FAIRVIEW**  
Years open: 1882 - 2004  
Records held: 1882-2004  
Publications: 75<sup>th</sup> Jubilee McNicholl collection  
Claremont School and Fairview School  
folder compilation) DH84  
Notes: aka Seaview, merged with Claremont, became Barton Rural

School: **FOUR PEAKS**  
Years open: 1913-1924  
Records held: 1913-1924  
Records held: None

School: **GAPES VALLEY**  
Years open: 1881-1948  
Records held: 1881-1948  
Publications: Geraldine District Schools (folder compilation, incl. Gapes Valley) DH86

School: **GEORGETOWN**  
Years open: 1856 - c1873  
Rolls held: None  
Notes: Arowhenua Presbyterian down river from Arowhenua, before Temuka

School: **GERALDINE**  
Years open: 1867- present  
Records held: 1907-1993  
Publications: 1862-1932  
1862-1962 A Centenary of Schooling DH25  
1862-1987 Schooling in Geraldine  
1862-2012 Our Place, Our School, Our People - 150 years of Schooling  
Geraldine District Schools DH86  
aka Geraldine Flat



School: **GERALDINE ALL HALLOWS**  
Years open: 1945-1973  
Records held: 1945-1972



**All  
Hallows  
1959**

School: **GERALDINE DISTRICT HIGH SCHOOL**  
Years open: 1901- present  
Records held: 1914-1962  
Notes: Opened 1901 to 1908, then 1914-1962; 1963 became Geraldine High School



School: **GLENAVY**  
Years open: 1889- present  
Records held: 1889-1969  
Publications: Centenary 1889-1989 DH99  
Some Waimate District Schools (folder compilation, incl. Glenavy) DH99  
aka Waitaki North





School: **GLENITI**  
 Years open: 1879 - present  
 Records held: 1879-1937  
 Publications: Cheerful Yesterdays: A Centennial History of the  
 Gleniti (Wai-iti) School 1879-1979 - Wm. C. Charteris DH27  
 Timaru Town Schools folder compilation, incl. Gleniti) DH94  
 Notes: aka Wai-iti

School: **GRANTCHESTER**  
 Years open: 1927-1935  
 Rolls held: None  
 Notes: Private boys' school. On corner of Otipua Road & Grandi Avenue

School: **GRANTLEA**  
 Years open: 1958-2004  
 Records held: 1958-2004  
 Publications: 1959-1984 25<sup>th</sup> Jubilee  
 Notes: 1959-2009 The School on Grants Road DH117  
 Merged with Seadown to become Grantlea Downs in 2005



School: **GRAY'S CORNER**  
 Years open: 1906-1989  
 Records held: 1906-1959  
 Publications: Some Waimate District Schools (folder compilation, incl. Gray's Corner) DH99  
 Notes: Started in 1906 as a household school.

School: **GREENHILLS**  
 Years open: 1898-1905  
 Records held: None  
 Notes: At Waihao, Waimate County

School: **HAKATARAMEA**  
 Years open: 1890-1965  
 Records held: None  
 Notes: Pupils moved to Kurow DHS. Aka Sandhurst

School: **HAKATARAMEA STATION**  
 Years open: 1920-1922  
 Records held: None  
 Publications: Haka Valley & Station Creek 1884-1934  
 Notes: 1920, 1921 school at Haka Station, five pupils; 1922 Household school



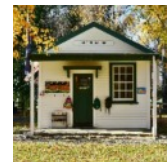
School: **HAKATARAMEA VALLEY**  
Years open: 1884-2003  
Records held: None  
Publications: Haka Valley & Station Creek 1884-1934



Echoes from the Past 1884-1984 - contains roll  
Esk Valley School & Otaio School & Hakataramea Valley School DH96  
Notes: Opened in 1884 under Otago Education Board. Also known as Haka Valley.

School: **HALDON STATION**

Years open: 1879  
Publications: Fairlie & District Schools (folder, incl. Haldon Station) DH85



Notes: Household school in Mackenzie Country; opened 1879. Now a correspondence unit.

School: **HAMILTON**

Years open: 1893 - ????  
Notes: In the Mackenzie Country

School: **HANNATON**

Years open: 1873-1972  
Records held: None  
Publications: Some Waimate District Schools (folder compilation, incl. Hannaton) DH99  
"75 years" : Jubilee Studholme School and District 1894 - 1969 - Museum  
Notes: Also known as and name changed to Nukuroa; 1954 name changed to Studholme

School: **MRS T. S. HARDY'S SCHOOL**

Years open: 19880s  
Records held: None  
Notes: Girls' finishing school. Located in Waimate

School: **HAZELBURN**

Years open: 1879-1938  
Records held: 1879-1938 unverified  
Publications: Pleasant Point - a Centenary of Schooling 1868-1968 DH59



Hazelburn 1912

Pleasant Days - a History of Education in the Pleasant Point district DH60  
Notes: Consolidated on Pleasant Point 1938; also known as Totara when opened, then Mt Gay till 1889. Hazelburn as at December 1912

School: **HIGHFIELD**

Years open: 1962 - present  
Records held: None  
Publications: 25<sup>th</sup> Jubilee 1962-1987 DH94



School: **HILTON**  
Years open: 1875-2004  
Records held: 1917-1959  
Publications: 1875-2000 DH86



**Hilton  
1968**

Hilton & Gapes Valley 1875-1975 DH135

Notes: Opened 1875 ; prior to 1916 known as Kakahu; 2005 merged with Geraldine Primary.

School: **HOOK**  
Years open: 1879-1996  
Records held: 1881-1925  
Publications: 1879-1931



School: **HOOK BUSH**  
Years open: 1911-1928  
Rolls held: None  
Notes: In Waimate County

School: **HUNTER**  
Years open: 1878 - 1997  
Records held: 1918 - 1978  
Publications: Hunter and Teschmaker Schools & District. DH87  
Hunter School 1879-1979 (Centennial History). DH107  
Notes: Previously known as Upper Makikihi. Earlier records lost in fire in 1955.  
Teschemaker School amalgamated with Hunter in 1943.

School: **IKAWAI**  
Years open: 1882 - 1998  
Records held: 1885 - 1956  
Publications: 1882 - 1957 75<sup>th</sup> Jubilee Paul McNicholl collection  
1882 - 1972 90<sup>th</sup> Jubilee Paul McNicholl collection  
1882 - 1982 Centenary Paul McNicholl collection  
1982 - 1997 The Last 15 Years Paul McNicholl collection



Notes: Some Waimate District Schools - includes Redcliff. DH99  
Known as Redcliff before 1917

School: **IRISHMAN'S CREEK**  
Years open: 1950 - 1957  
Records held: 1950 - 1957

**School:** **KAKAHU**

**Years open:** 1877 - 1938

**Records held:** 1877 - 1916

**Publications:** 1875-2000 DH86

Hilton & Gapes Valley 1875-1975 DH135

Geraldine District Schools: includes Hilton

(Kakahu) & Gapes Valley Schools & Districts. DH86

**Notes:** Known as Hilton from 1885. Merged with Geraldine Primary 2005.



**Kakahu Community Hall  
(formerly Kakahu  
School) April 1983.**

**School:** **KAKAHU BUSH**

**Years open:** 1884 - 1937

**Records held:** 1884 - 1937

**Notes:** Consolidated on Pleasant Point in 1938

**School:** **KAPUA**

**Years open:** 1893 - 1938

**Publications:** Some Waimate District Schools: includes Kapua. DH99

**Notes:** Fire in 1902. Consolidated on Waimate 1939.

**School:** **KIMBELL**

**Years open:** 1884 - 1946

**Records held:** 1918 - 1945

**Publications:** 1885-1946 by Bruce Keys (1985)

Fairlie & District Schools: includes Kimbell/Silverstream. DH85

**Notes:** Known as Silverstream before 1925, consolidated on Fairlie 1946

**School:** **KINGSDOWN**

**Years open:** 1882 - 1983

**Records held:** 1886 - 1983

**Publications:** Kingsdown School 1882-1982 DH88

**School:** **KOHIKA**

**Years open:** 1903 - 1938

**Records held:** 1903 - 1938

**School:** **LAKE PUKAKI**

**Years open:** 1948 - 1969

**Records held:** None

**Publications:** 1948-1969 21<sup>st</sup> Jubilee & Reunion Paul McNicholl collection

**School:** LAKE TEKAPO  
**Years open:** 1940 - present  
**Records held:** None  
**Publications:** Lake Tekapo School, 1940-1990 :  
and other small schools in the  
Mackenzie Country from 1923  
By James Maxwell



Lake Tekapo School 1976

**School:** LITTLE RODERICK  
**Years open:** 1910-1911  
**Rolls held:** None  
**Notes:** Household school. Three pupils in 1911. 1911 only year it appears in  
Education Board Annual Reports. In Waitaki Valley.

**School:** LONGRIDGE  
**Years open:** 1928 - 1936  
**Records held:** 1928 - 1936

**School:** LOWER WAITOHI FLAT  
**Years open:** 1875 - 1931

**School:** LYALLDALE  
**Years open:** 1901 - 1929  
**Records held:** 1901 - 1929 - Partial list of names and  
some dates only  
**Publications:** Lyalldale: A Vision Realised, John Button DH77



Lyalldale School

**School:** MACKENZIE COLLEGE  
**Years open:** 1922 - present  
**Records held:** 1922-1947  
**Publications:** 1879-1954 75<sup>th</sup> Jubilee McNicholl collection  
1879-1964 85<sup>th</sup> Jubilee The Past 10 Years  
1879-1979 Fairlie 100 & contributing schools  
1879-2004 125<sup>th</sup> Jubilee Paul McNicholl collection  
Fairlie & District Schools - compilation  
including Fairlie (Fairlie Creek) Fairlie DHS DH85  
**Notes:** Previously Fairlie District High School (1919/1922) & Fairlie High School



Fairlie District High School  
(Mackenzie College)

**School:** MAKIKIHI  
**Years open:** 1881 - present  
**Records held:** 1881 - 1922  
**Publications:** 1881 - 1931 School Jubilee and District Reunion  
1881 - 1981 Paul McNicholl collection



Makikihi School

**School:** MARCHWIEL

**Years open:** 1950 - 2004

**Records held:** 1950-1986

**Publications:** 1950 - 1975 Silver Jubilee DH56

1950 - 2000 Golden Jubilee DH94

**Notes:** Merged with Washdyke in 2004 to become Oceanview Heights on Marchwiel site



**Marchwiel School 1950**

**School:** MARU (IHC)

**Years open:** 1966 - closed

**Rolls held:** None

**Notes:** Special school for handicapped children. Located in Nile Street, Timaru

**School:** MAUNGATI

**Years open:** 1913-2000

**Rolls held:** 1913 - 1984

**Publications:** 1913-1963 Golden Jubilee, contains roll

**Notes:** Also known as Te Maunga or Timaunga opened in a private house until a building was ready.



**School:** MAUNGATIRO HOUSEHOLD SCHOOL

**Years open:** 1919 - 1920

**Notes:** In the Hakataramea Valley

**School:** MRS McMEEKIN'S SCHOOL

**Years open:** 1888-1897

**Rolls held:** None

**Notes:** Private school for girls & boys. Conducted by Mrs McMeekin. Known to be open in 1888 in High Street, Timaru. 1890-1892 in Barnard Street. 1893 in Sophia Street.

**School:** MERCY COLLEGE

**Years open:** 1935 - 1981

**Records held:** None

**Publications:** Timaru Catholic Secondary Schools: Golden Jubilee 1937-1987 (St Patricks High School 1938; Mercy College 1936; Roncalli College 1982) DH111

**Notes:** Opened 1935 as Sacred Heart College. Became Mercy College in 1969. Merged with St Patrick's boys school in 1981 to become Roncalli College



**School:** MESOPOTAMIA

**Years open:** 1956 - 2000

**Records held:** None

**Notes:** Household school



**Mesopotamia School**

**School:** MILFORD

**Years open:** 1873 - 2004

**Rolls held:** 1882 - 1980

**Publications:** Temuka District Schools - compilation including Milford DH93

**Notes:** Merged with Winchester in 2005

**School:** **MONAVALE**

**Years open:** 1913 - 1944

**Rolls held:** 1913 - 1943

**Publications:** Albury and District Schools: Albury, and Chamberlain, Monavale, Mt Nessing, Tengawai; Monavale DH 91

Albury School 125<sup>th</sup> Jubilee 1882-2007 (Te Nagawai, Chamberlain, Mona Vale, Mt Nessing) DH101



**Mona  
Vale  
School**

**School:** **MORVEN**

**Years open:** 1872 - 2016

**Rolls held:** 1879-1937

**Publications:** Morven 1930; 100 Years of Education 1879-1979  
Schools compilation including Morven (Waihao) DH99

**Notes:** Known as Waihao before 1899



**School:** **MORVEN ST JOSEPH'S**

**Years open:** 1916-1954

**Rolls held:** None

**Publications:** Schools compilation including Morven St Joseph's DH99

**School:** **MOUNTAINVIEW HIGH SCHOOL**

**Years open:** 1983 -

**Rolls held:** None

**Publications:** Timaru College-Mountainview 90 Years  
Timaru College-Mountainview 100 Years

**Notes:** Formerly Timaru College. Started in Pages Rd when Timaru College site became Polytech



**School:** **MT COOK**

**Years open:** 1959 - present

**Rolls held:** None

**Notes:** also known as Aoraki Mt Cook

**School:** **MT NESSING**

**Years open:** 1918 - 1937

**Rolls held:** 1918 - 1937

**Publications:** Schools compilation including Mt Nessing DH91  
Albury School 125<sup>th</sup> Jubilee 1882-2007 (Te Ngawai, Chamberlain, Mona Vale, Mt. Nessing) DH101



**School:** **MT PARKER**  
**Years open:** 1926 - 1937  
**Rolls held:** 1926 - 1935  
**Publications:** Centennial Kurow Schools 1882-1982 (100 years education: Kurow, Wharekuri, Otiake, Hakataramea, Mt. Parker, Foveran) OT32  
**Notes:** Station school in the Waitaki Valley

**School:** **NORTH ORARI**  
**Years open:** 1879 - 1893  
**Rolls held:** None  
**Notes:** also known as South Rangitata

**School:** **OCEANVIEW HEIGHTS**  
**Years open:** 2005 - present  
**Rolls held:** None  
**Notes:** Ex Marchwiell and Washdyke schools on site of former Marchwiell School



**School:** **OPIHI**  
**Years open:** 1874 - 1935  
**Rolls held:** 1877 - 1935 unverified  
**Notes:** Destroyed by fire 1 January 1936, consolidated on Pleasant Point



**School:** **OPIHI COLLEGE**  
**Years open:** 2005 - present  
**Rolls held:** None  
**Notes:** Ex Temuka High School & Pleasant Point High School



**School:** **ORARI**  
**Years open:** 1879 - 2004  
**Rolls held:** 1974-1995  
**Publications:** Orari & Belfield 1879-1956 77<sup>th</sup> Anniversary  
Orari & Belfield 1879-1979 DH46  
Schools compilation including Orari DH86  
**Notes:** Opened as Orari South. Early records lost. Merged with Geraldine

**School:** **ORARI BRIDGE**  
**Years open:** 1881 - 1995  
**Rolls held:** 1912 - 1995



**Notes:** Original school building was half of the closed Waihi Bush School. In 1905 school building completely destroyed by fire; new building erected.

**School:** **ORARI GORGE**

**Years open:** 1895 - 1974

**Rolls held:** 1895 - 1974

**Publications:** Geraldine District Schools compilation, including Tripp (Orari Gorge) DH86  
**Notes:** Opened 1895, when a building presented to the Board by Mr C. G. Tripp.  
Known as Tripp from 1933



**School:** **ORTON**

**Years open:** 1878 - 1947

**Rolls held:** 1887 - 1924

**Publications:** Temuka District Schools compilation, including Clandeboye (& Orton) DH93  
Milk Cans & Bush Telegraph - a collection of memoirs of Clandeboye School and Orton School, by Shirley Mackle, 2000

**School:** **OTAIO**

**Years open:** 1876 - 1998

**Rolls held:** 1881 - 1947

**Publications:** Otaio School DH96

**Notes:** Also known as Lower Otaio

**School:** **PAREORA EAST**

**Years open:** 1907 - 2018

**Rolls held:** 1907 - 1966

**Notes:** Incorporated into Timaru School Campus in 2005;  
remains on Pareora site.



**School:** **PAREORA WEST**

**Years open:** 1874 - 1997

**Rolls held:** 1874 - 1949

**Publications:** Centennial 1874-1974 DH89

**Notes:** In early days known as Pareora School and Beaconsfield School.  
Beaconsfield School was officially opened on Pareora West site in October 1997, following a voluntary E.D.I. between Southburn School and Otipua Pareora West and more recently Maungati. In 2005 Salisbury School and Beaconsfield School merged on the Beaconsfield site.



**School:** **PEEL FOREST**

**Years open:** 1870 - 1998

**Rolls held:** 1878 - 1997

**Publications:** Scotsburn, Peel Forest Schools: 125 Years On DH39  
Geraldine District Schools compilation, including Peel Forest (Scotsburn) DH86

**Notes:** Opened in 1878 but school in district from 1870. Known as Scotsburn until 1930. Now known as Carew Peel Forest.





**School:** PLEASANT POINT DISTRICT HIGH SCHOOL  
**Years open:** 1905 - 2004  
**Rolls held:** 1919 - 2004  
**Publications:** Pleasant Point DHS 1868-1948



**School:** PLEASANT POINT  
**Years open:** 1868 - present  
**Rolls held:** 1899 - 1946  
**Publications:** Pleasant Point 1868-1968: A Centenary of Schooling DH59  
Pleasant Days: A History of Public Education in the Pleasant Point District - A. J. Pike DH60  
Pleasant Point District High School: Souvenir History 1868-1948 DH76  
New Pathways: A History of Pleasant Point High School 1970-2004 - Alistair J. Pike DH78  
Pleasant Point District Schools: Consolidation . . . ; Pleasant Point Schools, Pleasant Point St Joseph's DH95  
**Notes:** Pleasant Point School opened in 1868. From 1905 till 1969 it was Pleasant Point District High School. From 1970 it separated into two schools – Pleasant Point Primary, which is still open, and Pleasant Point High School, which closed in 2004 & in 2005 with Temuka High School became Opihi College.

**School:** PLEASANT VALLEY  
**Years open:** 1875 - 1972  
**Rolls held:** None

**School:** PUSEY HOUSEHOLD  
**Years open:** 1910  
**Rolls held:** None

**School:** RANGATIRA VALLEY  
**Years open:** 1886 - 1938  
**Rolls held:** 1886 - 1915  
**Notes:** Closing date not known (later than 1915). "Rangatira Valley school was shifted to Winchester Settlement" (*Timaru Herald*, 27 December 1917). This may signal the closing as Te Awa/Winchester Settlement School opened in 1917.

**School:** RANGITATA ISLAND  
**Years open:** 1878 - 1988  
**Rolls held:** 1878 - 1985  
**Publications:** Compilation including Rangitata Island School DH86

**School:** **RANGITATA STATION**

**Years open:** 1886 - 1975

**Rolls held:** 1886 - 1975

**School:** **RIVERLANDS HOUSEHOLD SCHOOL**

**Years open:** 1909 - 1910

**Rolls held:** None

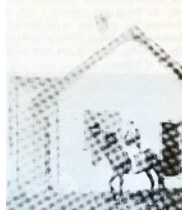
**School:** **ROCKWOOD**

**Years open:** 1911 - 1937

**Rolls held:** 1911 - 1937

**Publications:** Pleasant Days: Public Education in the Pleasant Point District - A. J. Pike DH60

**Notes:** Consolidated on Pleasant Point 1938, known as Waterfalls 1890-1894



**School:** **RONCALLI COLLEGE**

**Years open:** 1982 - present

**Rolls held:** None

**Publications:** Timaru Catholic Secondary Schools: Golden Jubilee 1937-1987 (St Patricks High School 1938; Mercy College 1936; Roncalli College 1982) DH111

**Notes:** Amalgamation of Mercy College & St Patrick's High School



**School:** **ROSEWILL**

**Years open:** 1906 - 1938

**Rolls held:** 1906 - 1938

**Notes:** Consolidated on Pleasant Point in 1939

**School:** **ROUND HILL HOUSEHOLD SCHOOL**

**Years open:** 1920 - 1920

**Rolls held:** None

**Notes:** Hakataramea Valley

**School:** **SACRED HEART BOYS SCHOOL**

**Years open:** 1902 - 1928

**Rolls held:** 1902 - 1928

**Publications:** DH50

**Notes:** Boys transferred to and/or from Marist Brothers School at different dates.



**School:** **SACRED HEART GIRLS SCHOOL**

**Years open:** 1879 - 1928

**Rolls held:** 1879 - 1928

**Publications:** Sacred Heart Primary School Centenary, Timaru 1879-1979 DH50

**Notes:** Gaps in registers. Co-educational since 1982



**School:** SACRED HEART COLLEGE

**Years open:** 1880 - 1968

**Rolls held:** None

**Notes:** Became Mercy College in 1969. Boarding school closed in mid 1970s.



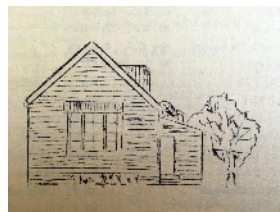
Sacred  
Heart  
Convent

**School:** SALISBURY

**Years open:** 1899 - 2004

**Rolls held:** 1899 - 1980

**Publications:** 1899-1974 75<sup>th</sup> Jubilee



Salisbury School Centennial 1899-1999 DH57

Folder including Salisbury School DH89

**Notes:** Merged with Beaconsfield 2005

**School:** SANDHURST

**Publications:** Centennial Kurow Schools 1882-1982 (100 years education:  
Kurow, Wharekuri, Otiake, Hakataramea, Mt. Parker, Foveran) OT32

**Notes:** 1890. Became Hakataramea

**School:** SCOTSBURN

**Years open:** 1878 - 1997

**Rolls held:** 1878 - 1997

**Publications:** Scotsburn, Peel Forest Schools: 125 Years On DH39



Geraldine District Schools: folder includes Peel Forest (Scotsburn) DH86

**Notes:** Opened 1878. Name changed to Peel Forest in 1930. Now known as  
Carew Peel Forest School

**School:** SEADOWN

**Years open:** 1890 - 2004

**Rolls held:** 1890 - 2004

**Publications:** Seadown's 100th: Seadown School Centennial 1890-1990 DH70  
Seadown School and Washdyke School (compilation) DH92



**Notes:** Merged with Grantlea in 2005 to become Grantlea Downs

**School:** SEAVIEW

**Publications:** Claremont School and Fairview School (compilation) DH84

**Notes:** Opened 1882. Name changed to Fairview in 1887

**School:** SEVENTH DAY ADVENTIST - Timaru Central Private School

**Years open:** 1937 - 1970s?

**Notes:** Situated in Avenue Road.



**School:** **SHERWOOD DOWNS**  
**Years open:** 1917 - 1939  
**Rolls held:** 1917 - 1939  
**Publications:** Sherwood Downs and Beyond  
Fairlie & District Schools: folder includes Sherwood Downs DH85  
**Notes:** Consolidated on Fairlie 1940



**School:** **SILVERSTREAM**  
**Years open:** 1884 - 1946  
**Rolls held:** 1916 - 1925 Attendance register only  
**Publications:** Fairlie & District Schools: folder includes  
Kimbell/Silverstream DH85  
**Notes:** Name changed to Kimbell 1925

**School:** **SKIPTON**  
**Years open:** 1902 - 1953  
**Rolls held:** 1904 - 1953  
**Publications:** Fairlie & District Schools: folder includes Skipton DH85  
**Notes:** Consolidated on Fairlie 1954

**School:** **SOUTHBURN**  
**Years open:** 1892 - 1998  
**Rolls held:** 1892 - 1955  
**Publications:** 1892-1992 Carol Bell



South of the Burn: The Southburn Story 1892-1962, by John Button DH36  
**Notes:** Known as Blackburn 1892-1895, consolidated on Pareora West 1998

**School:** **SPRINGBROOK**  
**Years open:** 1895 - 1995  
**Rolls held:** 1895 - 1994  
**Publications:** Part 1 Springbrook Householders Index and School Pupils; Part 2  
"Springbrook" (publication) DH62  
Springbrook: Seventy-five years of progress - compiled by  
Margaret Smith and Ivy Preston DH97  
Living at the Brook: The Story of Springbrook - Margaret O'Donnell DH40



**School:** **ST ANDREWS**  
**Years open:** 1881 - present  
**Rolls held:** 1881 - 1931  
**Publications:** The St Andrews Way 1881-1981 Paul McNicholl collection



**School:** **ST JOSEPH'S, FAIRLIE**  
**Years open:** 1939 - present  
**Publications:** St Joseph's School 1939-1989 50<sup>th</sup> Jubilee DH82

**School:** **ST CATHERINE'S COLLEGE**  
**Years open:** 1940s-1966  
**Rolls held:** None  
**Notes:** Primary school opened by Sisters of Mercy in their Convent. Some students who lived too far to travel to the school boarded at the school. Closed when there were too few Sisters & children were sent to Sacred Heart School.



**School:** **ST JOSEPH'S , KERRYTOWN**  
**Years open:** 1883 - 1946  
**Rolls held:** None  
**Publications:** St Joseph's School Kerrytown: Centenary 1883-1983 DH81  
**Notes:** All records lost

**School:** **ST JOSEPH'S, MORVEN**  
**Years open:** 1917 - 1954  
**Rolls held:** None  
**Publications:** Some Waimate District Schools: compilation including Morven St Joseph's DH99

**School:** **ST JOSEPH'S, PLEASANT POINT**  
**Years open:** 1928 - present  
**Rolls held:** None  
**Publications:** St Joseph's Convent School 1929-1978  
Pleasant Point District Schools: Consolidation . . . ; including Pleasant Point St Joseph's DH95

**School:** **ST JOSEPH'S, TEMUKA**  
**Years open:** 1883 - present  
**Rolls held:** 1911 - 1935  
**Publications:** Now I Remember 1883-1983 McNicholl collection  
1883-2008 McNicholl collection

**School:** **ST JOSEPH'S, TIMARU**  
**Years open:** 1939 - present  
**Rolls held:** None  
**Notes:** Merged with St Mary's from Douglas St in 1983  
**Publications:** The Northenders: A History of St Joseph's Timaru North Parish – Jeannette Cooke DH124

**School:** **ST PATRICK'S CATHOLIC SCHOOL, WAIMATE**  
**Years open:** 1880 - Open  
**Rolls held:** None  
**Publications:** 125 Years of Catholic Education in Waimate 1880-2005

**School:** **ST PATRICK'S HIGH SCHOOL**  
**Years open:** 1938 - 1981  
**Rolls held:** None  
**Publications:** 1938-1962 Silver Jubilee  
Timaru Catholic Secondary Schools: Golden Jubilee 1937-1987 (St  
Patricks High School 1938; Mercy College 1936; Roncalli College  
1982) DH111  
**Notes:** Merged with Mercy College in 1981 to become Roncalli College

**School:** **STATION CREEK**  
**Years open:** 1894 - 1900  
**Rolls held:** None  
**Notes:** In Hakataramea Valley

**School:** **STEW POINT HOUSEHOLD**  
**Years open:** 1928 - 1929  
**Rolls held:** None  
**Notes:** Household school in Pleasant Point district

**School:** **STRUAN HOUSEHOLD**  
**Years open:** 1911 - 1914  
**Rolls held:** None  
**Notes:** Household school in vicinity of Kurow

**School:** **STUDHOLME**  
**Years open:** 1893 - 1972  
**Rolls held:** 1963 -1972  
**Publications:** 1894-1969 75 Years McNicholl collection



Some Waimate District Schools: compilation including Hannaton-  
Nukuroa/Studholme DH99

**Notes:** Opened in 1893 as Hannaton; renamed Nukuroa in 1930; named  
changed to Studholme in 1954

**School:** **SUTHERLANDS**  
**Years open:** 1883 - 1938  
**Rolls held:** 1894 - 1938  
**Notes:** Consolidated on Pleasant Point



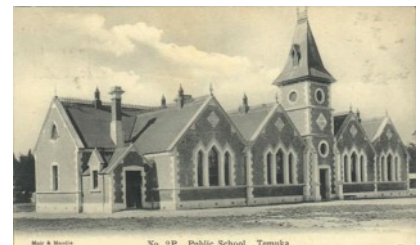
**School:** **TASMAN DOWNS**  
**Years open:** 1923 - 1945  
**Rolls held:** 1923 - 1945  
**Notes:** Tasman Downs Station school

**School:** **TAWAI**  
**Years open:** 1890 - 1947  
**Rolls held:** 1913 - 1947  
**Notes:** Known as Waitaki Village Settlement until 1909

**School:** **TE AWA**  
**Years open:** 1917 - 1954  
**Rolls held:** 1917 - 1954  
**Notes:** also known as Winchester Settlement; building moved from Rangitira Valley.

**School:** **TE MOANA**  
**Years open:** 1891 - 2003  
**Rolls held:** 1891 - 2003  
**Notes:** 1891-1950 not from admission register, but a copy of appendix to jubilee publication (only source of pre-1951 admissions), so probably incomplete. Later records lost in asbestos scare

**School:** **TE NGAWAI**  
**Years open:** 1903 - 1939  
**Rolls held:** None  
**Publications:** Albury and District Schools: compilation including Tengawai DH91  
Albury School 125th Jubilee 1882-2007 (Te Ngawai, Chamberlain, Mona Vale, Mt. Nessing) DH101  
**Notes:** Consolidated on Albury School 1940



**School:** **TEMUKA**  
**Years open:** 1865 - present  
**Rolls held:** 1881 - 1938  
**Publications:** Temuka District Schools: compilation including Temuka DH93  
100 Years in Three Days, by B.E Gale  
**Notes:** Opened 1873; a school conducted from 1865; prior to 1865 known as Arowhenua; first public school erected in 1867

**School:** **TEMUKA DISTRICT HIGH SCHOOL**  
**Years open:** 1883 - now Opihi College  
**Rolls held:** None  
**Publications:** 1866-1934 Whakakotahitanga  
1866-1956 90<sup>th</sup> Reunion  
1866-1991 Temuka Schools, L.H McGillen  
1866-1991 125<sup>th</sup> Jubilee DH159



**Notes:** Became known as Temuka High School in 1968 then merged with Pleasant Point High School in 2005 to become Opihi College

**School:** **TIMARU BOYS HIGH SCHOOL**

**Years open:** 1880 - present

**Rolls held:** None

**Publications:** Schoolroom and Playing Field: A Centennial History of Timaru Boys' High School Centennial 1880-1980 - compiled by G. A. Macaulay DH52

The Rectorials: The Story of Boarding at Timaru Boys' High School – Alon Shaw & Dion Crooks DH118

Heart of Oak 1908-1983: A 75th Jubilee History of the Boarding Establishment at Timaru Boys' High School – Compiled by G. A. Macaulay DH119

Musings from the Dead Ball Line on Timaru Boys High School 1<sup>st</sup> XV Rugby 1880-2008 – compiled by Brian Petrie and Noel Smith DH120

Timaru Boys' High School Memorial Library 1917-2007 – compiled by Brian Petrie and Jeff Elston DH121

Eighty Years On: Timaru Boys' High School 1st XV v St Andrew's College 1st XV – R. Mervyn Tairaroa & Don Davison (1929-2011) DH122

Timaru Boys' High School Prospectus, 1953 DH143

**Notes:** Originally on same site as Timaru Girls' High School, with dividing fence



**School:** **TIMARU GIRLS HIGH SCHOOL**

**Years open:** 1880 - present

**Rolls held:** None

**Publications:** 1880-1930 Chronicle (Jubilee No.19 March 1930)

1880-1955 75<sup>th</sup> Jubilee

Timaru Girls' High School Hostel Reunion Booklet 1916-1971: "House" 50<sup>th</sup> Anniversary DH67

Timaru Girls' High School Centennial Magazine 1880-1980 DH68

Timaru Girls' High School Centennial Celebrations 1880-1980 DH68a

Timaru Girls' High School Prospectus (1995) DH69

Lively Retrospect: Timaru Girls High School 1880-1980 - Averille

Lawrence 1980-2005 A 25-year Snapshot DH110

Timaru Girls' High School: A 25 year snapshot from 1980-2005 DH112



**School:** **TIMARU CHRISTIAN**

**Years open:** 1996 - present

**Rolls held:** None

**School:** **TIMARU GRAMMAR**

**Years open:** 1859 - 1874

**Rolls held:** None

**Publications:** Timaru Town Schools – compilation including Timaru's First School DH94

**Notes:** Church school. In Barnard St, then Browne St. Forerunner of Timaru Main School



**School:** **TIMARU MAIN**

**Years open:** 1873 - 2004

**Rolls held:** 1873 - 1986

**Publications:** 50<sup>th</sup> Jubilee 1874-1924 Carol Bell collection

Timaru Main School 1874-1949: Souvenir of Platinum Jubilee DH54

Timaru Main School Centennial Celebration 1874-1974 DH104

Timaru Main School 125<sup>th</sup> Jubilee: 3 Schools 1874-1999 DH105

Timaru Town Schools – compilation including Timaru Main DH94

**Notes:** Opened 1859 as a church school. First public school in Timaru. 1881-1895 Timaru South was a side school of Timaru Main. Merged with Timaru West in 2004 to become Bluestone School on the West School site



**School:** **TIMARU MARIST BROS**

**Years open:** 1881-1982

**Rolls held:** None

**Publications:** Marist Brothers School Jubilee 1892-1952: Jubilee Magazine DH24

1881-1981 Centenary Paul McNicholl Collection

**Notes:** Also known as Sacred Heart Parish School for Boys 1902-1928. Junior boys attended Sacred Heart Parish School (1902-1928); older boys attended Marist Brothers School; 1985 Marist Brothers school merged with Sacred Heart and became a school for boys and girls on the Marist site.

**School:** **TIMARU SOUTH**

**Years open:** 1881 - present

**Rolls held:** 1881 - 1955

**Publications:** Timaru South School 75<sup>th</sup> Jubilee 1881-1956 DH08

Timaru South School Centenary 1881-1981 DH53

1881-2006 125<sup>th</sup> Jubilee Paul McNicholl collection

Timaru Town Schools – compilation including Timaru South DH94

**Notes:** Opened 1881 as Side School to Timaru Main; 1896 became full and independent school; Pareora East incorporated into Timaru South campus from 2005



**School:** **TIMARU TECHNICAL COLLEGE / HIGH SCHOOL**

**Years open:** 1901 - 1983

**Rolls held:** 1942 - 1980

**Publications:** 1901-2001 (Mountainview) 100 Years

**Notes:** Timaru Technical High School renamed Timaru College in 1970s. High School became Mountainview College at Pages Rd site in 1983. High School buildings at original Arthur St site became Aoraki Polytech.



**School:** **TIMARU WEST**

**Years open:** 1914 - 2004

**Rolls held:** 1914 - 1989

**Publications:** 1914-1964 Golden Jubilee Paul McNicholl collection

1914-1989 75<sup>th</sup> Jubilee Paul McNicholl collection

West School 2004 Paul McNicholl collection

1914-2014 Centenary and the evolution to Bluestone Paul McNicholl collection

Timaru Town Schools – compilation including Timaru West DH94

**Notes:** Opened in 1913 as Side School to Timaru Main; 1923 became full and independent school. Merged with Timaru Main in 1984 to become Bluestone School on West School site in Raymond St.



**School:** **TIMAUNGA**

**Years open:** 1913-2000

**Rolls held:** 1913 - 1984

**Publications:** 1913-1963 Golden Jubilee, contains roll

**Notes:** Also known as Maungati or Te Maunga. Timaunga School opened in a private house until a building was ready.



**School:** **TOTARA**

**Years open:** 1879 - 1942

**Rolls held:** 1879 - 1942

**Notes:** May have opened earlier. Also known as Mt Gay, and as Hazelburn from 1889. Consolidated on Pleasant Point 1942.



**School:** **TOTARA VALLEY**

**Years open:** 1885 - 1938

**Rolls held:** 1887 - 1937

**Publications:**

**Notes:** Consolidated on Pleasant Point 1938



**School:** **TRIPP SETTLEMENT**

**Years open:** 1895 - 1974

**Rolls held:** 1895 - 1974

**Publications:** Schools compilation including Tripp (Orari Gorge) DH86

**Notes:** Also known as Orari Gorge before 1933



**School:** **TWIZEL AREA**

**Years open:** 1970 - present

**Rolls held:** None

**Notes:** Merged with Twizel High School in 1986 to become Twizel Area School.



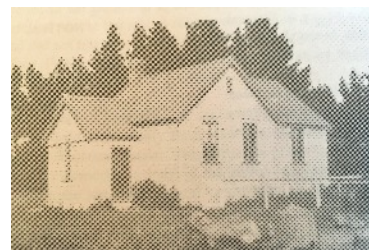
**School:** TYCHO  
**Years open:** 1906 - 1948  
**Rolls held:** 1906 - 1948  
**Notes:** Also known as Taiko

**School:** UPPER FERRY  
**Years open:** 1912 - 1952  
**Notes:** Also known as Douglas

**School:** UPPER MAKIKIHI  
**Years open:** 1879 - 1997  
**Records held:** 1918 - 1978  
**Publications:** Hunter and Teschmaker Schools & District. DH87  
Hunter School 1879-1979 (Centennial History). DH107  
**Notes:** Became known as Hunter. Earlier records lost in fire in 1955.

**School:** UPPER OTAIO  
**Years open:** 1878-1975  
**Records held:** 1881-1975  
**Publications:** Esk Valley School (folder compilation) DH96  
**Notes:** Known as Esk Valley from 1900

**School:** UPPER WAITOHI  
**Years open:** 1885 - 1941  
**Records held:** 1909 - 1941  
**Publications:** Schools compilation including Upper Waitohi DH95  
**Notes:** 1942 consolidated on Pleasant Point



**School:** UPPER WAITOHI FLAT  
**Years open:** 1885 - 1946  
**Records held:** None  
**Notes:** Closed 1906-1909; officially closed 31 May 1946, possibly effectively closed 1942; also known as The Peaks. Consolidated on Pleasant Point.

**School:** WAIHAO or WAIHAO NATIVE  
**Years open:** 1879 - 15 April 2016  
**Rolls held:** 1879-1937  
**Publications:** Morven 1930; 100 Years of Education 1879-1979  
Schools compilation including Morven (Waihao) DH99  
**Notes:** Became known as Morven 1899



**School:** **WAIHAO DOWNS**

**Years open:** 1901 - present

**Records held:** None



**School:** **WAIHAO FORKS**

**Years open:** In existence 1885 - gone by 1894

**Rolls held:** None

**School:** **WAIHAORUNGA**

**Years open:** 1902 - 2010

**Rolls held:** 1902 - 1950

**Publications:** The Waihaorunga Story: Community recollection past and present DH134



**School:** **WAIHI**

**Years open:** 1907-present

**Records held:** None

**Notes:** Boys' Anglican boarding preparatory school at Winchester. In more recent times open to day pupils.

**Publications:** History of Waihi School 1907-1982, by John Collins McNicholl collection

Behind the Hedge, by Oliver Riddell McNicholl collection

Waihi Boys' Preparatory (folder compilation) DH93



**School:** **WAIHI BUSH**

**Years open:** 1873 - now Woodbury

**Records held:** 1873-1955+

**Notes:** Known as Woodbury from 1881

**Publications:** Woodbury (Waihi Bush) (folder compilation) DH86

**School:** **WAIHI CROSSING**

**Years open:** 1870- now Winchester

**Records held:** (Winchester) 1870-1910 incomplete index only; 1909-1955+

**Publications:** Winchester Jubilee 1870-1995: Celebrating 125 Years DH21

Winchester School Jubilee 1947 DH79

**Notes:** Became known as Winchester

**School:** **WAIKAKAHI**

**Years open:** 1902-1933

**Records held:** None

**Publications:** Gray's Corner School, Waikakahi School (folder compilation) DH99

**Notes:** Both Gray's Corner and Waikakahi schools were on the Waikakahi estate. In 1907 both schools were open, each with a sole teacher; Gray's Corner with 12 pupils, Waikakahi with 26 pupils. We have records 1906-1959 for Gray's Corner (open 1906-1989). None for Waikakahi (open 1902-1933?).

**School:** **WAIMATAITAI**

**Years open:** 1882- present

**Records held:** 1882-1988

**Publications:** 1882-1932 History of Waimataitai - a Proud Record of 75 years McNicholl collection

Waimataitai School 1882 – 1982 100 Years DH129

Jubilee celebrations of Waimataitai - from The Timaru Herald, Aug 1932 DH42

Waimataitai (folder compilation) DH94

Waimataitai School 125th Jubilee 1882-2007 DH103



**School:** **WAIMATE CENTENNIAL**

**Years open:** 1955 - present

**Records held:** None

**Publications:** Waimate Centennial 1955-2005 The First 50 Years Paul McNicholl collection

Waimate Schools: Primary, District High, High Schools (folder comp) DH90



**School:** **WAIMATE HIGH SCHOOL**

**Years open:** 1883 - present

**Records held:** None

**Publications:** 1929-1924 Jubilee magazine Paul McNicholl collection

Waimate High School 1883-1979 Paul McNicholl collection,

1929-2004 A Pictorial Record Paul McNicholl collection, DH158

Waimate Schools: Primary, District High, High Schools (folder compilation) DH90

**Notes:** Known as Waimate District High School until 1929



**School:** **WAIMATE MAIN SCHOOL**

**Years open:** 1867 - present

**Records held:** 1913-1936

**Publications:** Waimate Main School 1867-1992 Paul McNicholl collection

Waimate Primary 1867-1932 Historical and Reminiscent Paul McNicholl collection

Waimate Primary & DHS 1867-1967 Paul McNicholl collection

Waimate Schools: Primary, District High, High Schools (folder comp) DH90



**School:** **WAITUNA CREEK**

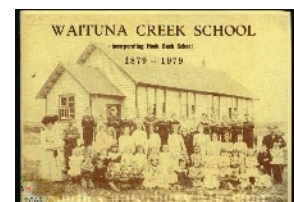
**Years open:** 1879 - present

**Records held:** None

**Publications:** Waituna Creek 1879-1929 Paul McNicholl collection

Waituna Creek 1879-1979 incorporating Hook Bush Paul McNicholl collection

Waituna Creek 1879-2004 Paul McNicholl collection



**School:** **WASHDYKE**

**Years open:** 1874 - 2004

**Rolls held:** 1881-2004

**Publications:** Washdyke School 1874-1974  
Washdyke School (folder compilation) DH92

**Notes:** Merged with Marchwiell to become Oceanview Heights in 2004



**School:** **WATERFALLS**

**Years open:** 1890-1894

**Rolls held:** None

**Notes:** Reopened in 1911 as Rockwood School

**School:** **WATLINGTON INTERMEDIATE**

**Years open:** 1974-2004

**Rolls held:** 1974-2004

**Publications:** Timaru Town Schools DH94

**Notes:** Closed 2004

**School:** **WATT LOWRY SCHOOL, TEMUKA**

**Years open:** 1918-1945

**Rolls held:** 1918-1945

**Notes:** At Bramwell Booth Salvation Army Boys' Home; opened 1917, 1926 - 4 Sep 1945  
Side School to Temuka. Aka Temuka Boys School

**School:** **WHARE-KIA-ORA PRIVATE SCHOOL, GERALDINE**

**Years open:** 1920s-1930s

**Rolls held:** None

**Notes:** In Lewis St, Geraldine. Also known as the Misses Sherratt's School

**School:** **WILLOWBRIDGE**

**Years open:** 1904-1993

**Rolls held:** 1904-1961

**Publications:** Some Waimate District Schools: incl Willowbridge (folder compilation) DH99  
75<sup>th</sup> Jubilee DH99

**School:** WINCHESTER

**Years open:** 1870-present

**Rolls held:** 1870-1948 - 1870-1909 index only (not comprehensive)

**Publications:** Winchester Jubilee 1870-1995: Celebrating 125 Years DH21

Winchester School Jubilee 1947 DH79

Winchester's History - Alan A. Patrick DH22

**Notes:** Previously known as Waihi Crossing. Winchester Rural since 2004.



**School:** WOODBURY

**Years open:** 1873 - present

**Rolls held:** 1873-1993

**Publications:** Geraldine District Schools: incl. Woodbury (Woodbury School Centennial 1881-1981) (folder comp – cover & 2000 photos only] DH86

**Notes:** Known alternatively as Waihi Bush until 1907

