

# South Canterbury Genealogy

September/October 2024



## From the editor

*Carol Bell*



Most important news this month is that Olwyn's website has found a new home and is now online again. And her new home is with us! Dave has made a spot for Olwyn within our own network so thanks must go to him. It's great to have this site back online. There is so much local history available there. See [scant.scgenealogy.nz](http://scant.scgenealogy.nz)

This month I'll be attending the 150<sup>th</sup> anniversary of Timaru Main School, Timaru's first public school which opened in 1874. I was at the 100<sup>th</sup> anniversary celebrations in 1974 which took place on my 25<sup>th</sup> birthday, and now the 150<sup>th</sup> celebrations are taking place on my 75<sup>th</sup> birthday. Now where did that time go? And how did I get to be that old??

Registration is now open for RootsTech 2025. Online participation is free so do take advantage of the opportunity to hear these world-class speakers. Register at

<https://www.familysearch.org/en/rootstech/?cid=EM-00042635&lid=d0aovmerrro7>

A list of the speakers already engaged can be found at

<https://www.familysearch.org/en/rootstech/schedule/preview>

# Chair's report



*from Liz Shea*



South Canterbury genealogical resources [timaru.gen.nz](http://timaru.gen.nz)

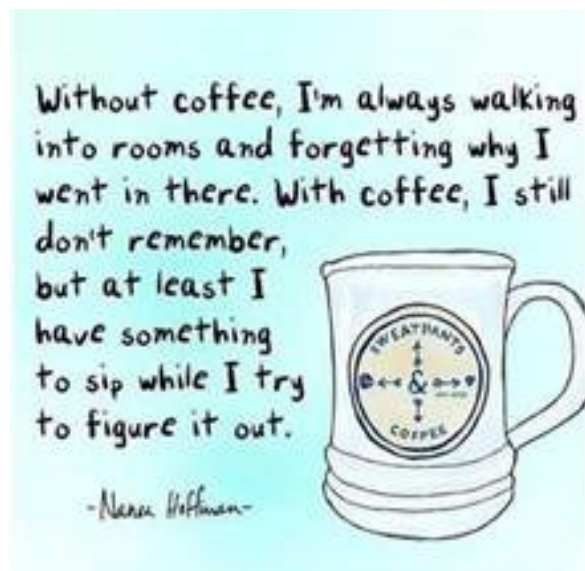
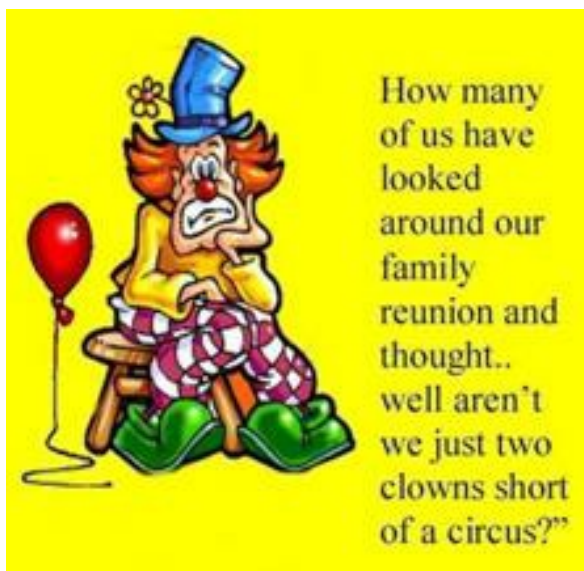
Hi everyone.

Daylight saving has kicked in again for the year and with lighter evenings, more time to spend outside instead of in front of the computer. My family history searches scale down over summer unless it is cold or raining.

In the last month I have been researching a William Brown and we all have a Brown or a Smith in our trees. Luckily for me, this William had a middle name, as did his siblings, so I was able to track him and his family down. A wee problem when a grandfather added an "e" making it Browne, but his occupation as an excise officer made him easier to track. Always up for a challenge and have been able to track these Browns back to 1708.

Timaru Council had plans for a new museum in a new heritage site along with a theatre, but these plans were discarded and it was back to the drawing board. Our society works closely with the SC Museum and with the proposed plan were looking forward to more room for meetings and storage but sadly, not to be. Museum staff were also disappointed as they were expecting larger display areas and expanded storage. At least we still have a museum and we will continue to work alongside them to promote genealogy and be custodians for our archives.

We welcome Dave Jack and Lois White as co-opted members of the SC Genealogy Committee. Their particular skills and knowledge will assist the committee and the society in the areas of website and archive updates (Dave) and the WW2 photo project (Lois).





# News



The WW2 project is progressing well and should soon be appearing on our website. Remember to dig out your WW2 photos and share them with Lois White at [darcycat26@gmail.com](mailto:darcycat26@gmail.com)

Many thanks to John Sutherland and Carol Dyer of the Otaki and Horowhenua Family History group who gave the answer to my WW2 question about Matelica. This area has cropped up in Carol's family history too. Google says: Matelica is a comune (municipality) of the Province of Macerata in the Italian region of Marche. Located about 60 kilometres (37 mi) southwest of Ancona and 35 kilometres (22 mi) west of Macerata, it extends over an area of 81.04 square kilometres (31.29 sq mi).

My problem was all in the spelling. I was Googling Metallica. And, of course, with that spelling you get: Metallica is an American heavy metal band. The band was formed in 1981 etc etc. Which just goes to prove if you always do what you've always done you'll always get what you always got!

## ***CITE BUILDER***

A very handy tip from Ann Munro's friend Judy: I use the source writer in Legacy but it falls short for templates for some sources. Not sure if any of you have used this web page, but I have found it extremely helpful when writing a source for a document. When you open the page, you are given three areas to select. I have only ever used the basic version which is free. The link is as follows Home - Cite Builder ([cite-builder.com](http://cite-builder.com)) (hover mouse over link, hold the control button then click left mouse button to open). When you open the basic version, you are taken to a list of citation sources, click on the one you want to use.

For example, within the Civil Births, Marriages, Deaths & Divorce, you then click on Indexes to Births, Marriages and Deaths and the next section gives you various countries – when you click on Australia you will find the BDM icons, clicking on these will then give you the states of Australia which you can then go into and enter the information for the document. Once that is done, click on "Build Source" and it creates the lines you can then copy and paste into your family history file.

Hope this is helpful to those of us who are not good at creating a source easily.

## **Plans for the year**

**October:** Jill Welford - WATO

**November:** Gordon Handy machinery museum

**December:** Christmas - brainstorming brick walls





# WORK OF HEART A LABOUR OF LOVE

Timaru author and SC Genealogy club member Cynthia McCaughan has published her second biography and social history book. *Work of Heart* follows the life and loves of the author's 3 x great grandmother Jane Norgate (later Preshaw), a midwife and the first matron of Reefton Hospital.

What caused 17-year-old Jane to step on a ship in London bound for Australia in 1856 and why she later fled across the Tasman to New Zealand alone with her young daughter was the beginning of many family mysteries that Cynthia sought to uncover. The result is *Work of Heart*; a 400-page story of courageous and determined people leaving past tragedies, lost loves, crimes and deceptions behind them to make new lives.

More than just a family history spanning nearly 200 years, *Work of Heart* also chronicles the birth of the new goldfield town of Reefton and the previously unwritten history of Reefton Hospital and its people, which Jane and David Preshaw selflessly devoted 30 years of their lives: a true 'work of heart'.

Cynthia's previous book *To Live a Long and Prosperous Life* (2016) won the Kevin McAnulty Award by NZ Society of Genealogists in 2017, of which one of the judges commented: "this book would have to be the best and most comprehensive family history I have come across."

Cynthia says that after over 12 years of research and writing "It is exciting to finally bring Jane's story and that of Reefton Hospital into the world – it has been a labour of love."

Cynthia McCaughan is a family historian, artist and writer who is passionate about uncovering previously untold stories, particularly those of women overlooked in conventional historical accounts. With a background in education, and experience researching and teaching social history as a museum educator, the author brings together records, contemporary accounts, family tales and unexpected DNA connections to uncover the secret motivations and desires that shape families and communities.

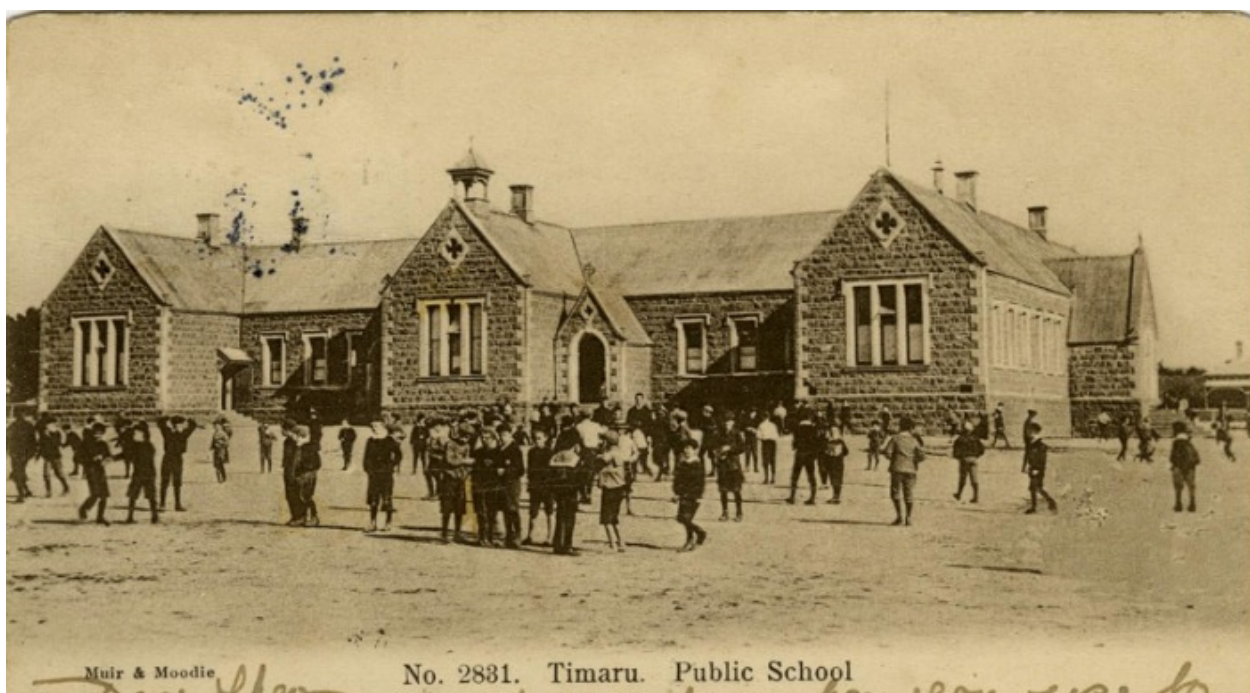
Copies of *Work of Heart* are expected to be in libraries soon and can be purchased for \$65.95 from the author. Order details can be found on her blog: <https://inkandstoneblog.wordpress.com/>



## **TIMARU MAIN SCHOOL 150<sup>th</sup> JUBILEE**

This month past pupils of Timaru Main School will celebrate 150 years since the school was opened. The formal opening took place on Wednesday 8 October 1874. The first school in Timaru under any kind of external control was started by the Church of England in August 1859, a few months before the arrival of the Strathallan that December. By 1870 there were calls for an undenominational school in public ownership and a site was finally approved in 1872 at Wilson's Paddock - a block bounded by North, Theodosia and Arthur Sts and Grey Rd. Building work began in September 1873 and the foundation stone was laid that December.

The formal opening in 1874 was observed as a public holiday with the chairman and superintendent of the Canterbury Board of Education, Hon C.C. Bowen and W. Rolleston arriving by coach, rail not yet reaching as far as Timaru. The day was marked with a procession and children's sports while the official guests and townspeople made a tour of the building. The evening gathering was attended by 700 people and included speeches and musical entertainment. A grand ball was held two nights later. The master's house and janitor's cottage were built in 1878 but the master's house was not supplied with outhouses etc until 1879. - 1974 Centennial publication



An aerial photo of the old and new school buildings in 1956 with the Technical College in the foreground. The infant block at left of the Main School site opened in 1940.



## WW2 project

Our WW2 Project is now well under way and we are still welcoming contributions from our members. Here are some guidelines of what we are collecting:

Photos of local men and women who served during WW2 - either overseas or at home. These can be portraits, group photographs (named or unnamed), wedding portraits - but individuals must be in military uniform - army, navy, air force, home guard etc.

Information and any stories are also wanted, as are unidentified photos (we will rise to the challenge of getting them identified)

Photographs and information can be emailed to Lois White [darcycat26@gmail.com](mailto:darcycat26@gmail.com) and stories to Lois Shears [lshears@xtra.co.nz](mailto:lshears@xtra.co.nz) If you are unable to scan them yourselves then please contact us and we can arrange this for you. Below is are a sample of what we have received so far.

**Lois White**



**Harold Bray's return**



**Mt Herbert, Lyttelton, 1943**



**Florence and Roy Cundall's wedding**

# **AN EARLY DRONE?**

Found while working on the WW2 database. This research is endlessly interesting!

**Timaru Herald**  
**19 September 1945**

## **SURRENDER AT RABAUL**

### **Slant On Japanese Behaviour**

#### **Timaru Airman's Account Claiming the biggest scoop of his life**

Sergeant J. McLean Gliddon, of the Photographic Section of the RNZAF, in a letter to his mother in Timaru, relates how he organised a "photo kite" and photographed from the air the signing of the surrender instrument by the Japanese representatives on the aircraft carrier Glory, in Blanche Bay, off Rabaul.

"Yesterday, after several false alarms, Lieutenant-General Mesetane Kanda, commander of the Japanese on Bougainville, arrived in HMAS Diamantina at our wharf. I procured an official accreditation from the Australians, and I was in on the biggest scoop of my life. We took a few photographs of the Japanese representatives coming off the ship, and then we rushed to the battle room-of the Second Australian Corps and I was allotted a space along with about 20 reporters and photographers, but only three of us were New Zealanders. "Accompanying General Kanda was Vice-Admiral Samejima, the Japanese naval commander, and they and their staff, including interpreters, were given morning tea. They were then



taken to the battle room and given the 'works.' It was a rare show and I enjoyed every minute of it. The Japanese were tidy, but not well dressed, and were doing everything in their power to please Lieutenant-General S. C. Savidge, commander of the 6<sup>th</sup> Australian' Second Corps, who was master of ceremonies. They even asked permission to pay a tribute to the Australian dead. It was granted, and they stood with bowed heads for about a minute. By this time most of us had left and only one Australian photographer snapped the scene. I think it was an oily gesture on the part of the Japanese," concludes the letter. According to the official account of the signing of the surrender, General Kanda, frail and weak, sat poker-faced, while General Savidge read the surrender terms. He wiped his brow with a hand that seemed paralysed. Admiral Samejima also signed. General Kanda had more than once in the last three months been bombed out of his headquarters by New Zealand planes. General Savidge warned the Japanese that delay or equivocation in carrying out the orders would not be tolerated in any circumstances. Rabaul, once the administrative capital of New Britain, has ceased to exist for all practical purposes, said an Australian officer. What used to be the town area was now a jungle about 20 to 20ft high [sic]. Not one building was standing. The wharves were completely demolished by bombing and the foreshore was littered with wrecks of large steamers and little boats. Practically the whole population had been living underground in miles of tunnels.

J McLean Gliddon doesn't yet have a Cenotaph page, but some quick research revealed:  
Born 25 May 1915 to Josephine & Richard Gliddon who are buried in Timaru Cemetery  
died 7 May 1986 Auckland, buried Purewa Crematorium with wife Beryl L who was a WAAF  
married Beryl Lillian Walker 1947

Headstone shows: Sgt J.M (Mac) Gliddon 41206 RNZAF & Beryl L Gliddon  
1938, 1941, 1943 electoral roll Timaru: John McLean Gliddon, 5 Catherine St, clerk  
1949 electoral roll Mt Albert: John McLean Gliddon, 4 Phyllis St, SW2, accountant  
Beryl Lilian Gliddon, 4 Phyllis St, SW2, married



# Olwyn's South Canterbury website

*New website address: [scant.scgenealogy.nz](http://scant.scgenealogy.nz)*

Earlier this year I went through boxes of family papers as storage and space was the problem so we decided to donate stuff. It is interesting to see what curators are interested in and not interested in. We ended up donating stuff to a historical society, rugby clubs, museums including a local military museum, op shops and an art gallery. A Timaru DB Stout banner received more interest than Volume One, No 1 The Lyttelton Times. We tried to give away the newspaper. No takers. It is already in the National Archives, already online and the newspaper was delicate, fragile would be another word. These places wanted photographs of people labelled. Museums have too many photographs where the individuals are unknown.

One of the problems was what to save and what to discard. Dad had a lot of WWII items e.g. a stack of The NZEF Times issued by the 2nd New Zealand Expeditionary Force, this serial was free to all NZEF personnel. It was published mainly in Egypt but a few editions were from Italy. We will end up giving them away but want to keep them in South Canterbury.

Brooches and pins. Here is an idea. Recently I saw a collection of pins, badges, rings and costume jewellery mounted, vintage brooches mounted in the shape of a Christmas tree surrounded by a pretty frame also called a brooch board.

Remember to take a video or photographs of items or a room before dismantling or dispersing the contents. This is a good idea whether or not you are keeping the items.

Don't store books tightly on a shelf. They need at least 1/8-inch wiggle room.

Don't store things in the pages of a book! Before giving away books, thumb through them. You never know what you might find. A class photo, cash, a keepsake.

Don't display any original records and photographs, use a copy instead. Prolonged light exposure will irreversibly fade paper, ink, artwork, textiles and photographs. If a newspaper is on display, turn the page frequently to reduce light exposure. Don't get rid of the original. Turn off lights when not in use - consider motion lights. Rotate stuff out.

Humidity over 68% you can get mould. For most archival material, being stored at or around 50% relative humidity is best. Don't laminate. Use mylar - pure polyester film. Post it notes - can leave residual - avoid them. Beware of mould developing in enclosed plastic.

Wood grain can transfer to paper due to acid. Place a layer of mylar between wood and items.

Dental floss can be used to get photos off glass or photograph albums. See this photo of a South Canterbury scene, "Skip", taken on "Ribbonwood" Sherwood Downs, Fairlie, the photograph was placed in a frame with no matting so the photo is touching the glass, it has adhered to the glass, can't get the photo off the glass without tearing the photograph. By the way my father would name all his dogs starting with the letter S and one syllable. e.g. Scott, Sharp, Sam. Skip was my dog.

Use nitrile gloves like they use in hospitals especially if handling metals.

Be careful with fingerprints, hold photographs by edges.

Regarding quilts - damage is hard to reverse. Close shades in the bedroom if you have a quilt on a bed. Crazy quilts can have silk- can deteriorate as silk was sold by weight, was washed in salt to increase weight. Don't let a quilt touch cedar. Cedar is good for keeping bugs out. Rotate quilts.

Reds fade and reds are notorious for bleeding. Quilts can be washed with Orvus paste (horse shampoo 2%), cheaper at a feed store. Rinse in the bathtub 7 times. Dry flat. Bound volumes - flat is ideal or well supported. Shelving (powder or enamel) preferred. Use soft paint brushes for cleaning, exterior only. Don't push books all the way back. Watch out for exterior walls - moisture.

Staedtler makes a good white eraser and eraser crumbs. Digitizing: 600dpi tiff (for preservation). 300 dpi jpg for sharing. Digitization is not preservation.

Standard Museum Artifact numbering. Three-part number.

Year - Donation in year - Item within donation - example: Accession. No. 2018.6.1



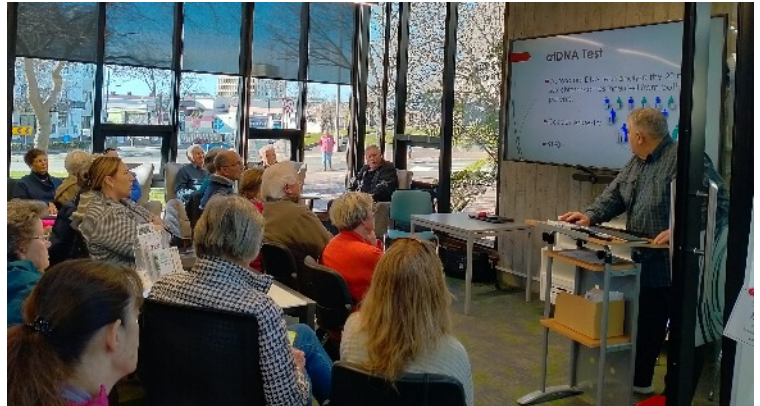
# Meeting reports



*with Lesley Tennent*



**August.** There was no formal group meeting in August. Instead members were encouraged to attend Family History Month sessions held at the library. There were two sessions with guest speakers - Dave Jack with a talk entitled 'DNA and Family History: What's it All About?' and Ting Sun from The National Library with 'DigitalNZ: a Family History Resource'. Both talks were well attended by group members and the general public.



**September:** 20 members attended the September meeting at the museum. Apologies: Faye O'Rourke, Lois White, Annette Batchelor, Clare Palliser, Carolyn Johnston. Esme Jones was surprised to find a large print of her great grandmother's sister's wedding on display at Timaru Museum. Lesley Tennent displayed the book, recently produced by Bill Washington, on Makikihi, Otaio, Hook & Hunter districts. Lesley researched and wrote the portion on Otaio. A second run is being done - \$85. Available at Washington Exploration, Washdyke.

Carol Bell did a presentation on her recent trip called On the Ancestor Trail 2024. She went May and June 2024, with the focus being on seeing places and getting a feel for areas pertaining to ancestors in England, Wales, Ireland, Northern Ireland and Scotland.

Visited Eniskillen in Northern Ireland, then on to Co Tyrone where members of

Matthews and McCall families were from. Found the grave of x3 great-grandfather John McCall at Ackinduff Cemetery. The wording has gone from the headstone. She

was able to look inside the church there. Carol noted the churches in Ireland were unlocked and open. Also visited Fenagh Abbey in Co Leitrim, south of Eniskillen for the Tubman family. On to Scotland. Visited Kilarlity, Kirkhill in Inverness-shire on the trail of her Jean and George Bell family, Morayshire for the Phimisters, and at Dundee she found Grandad's pub! South Berwickshire, where the Bell family originated, Carol was looking for a cemetery. It is no longer there but outline could be seen from a particular vantage point. Bamburgh and the Seahouses was the area where her son-in-law's family hailed from, Northumberland, Alnwick, then to Scarborough in Yorkshire. On to Bridlington, then Kent, to Tenterden and the church at Kemsing where her x3 great-grandparents buried. Headstones are deteriorating of her Holden Family. She was given a postcard showing the actual house and forge of the x3 great-grandparents, also the house one of their sons had built. Called Clement House it is still there.

Raffle: Diane Carroll.





# Members' Interests



*from John Sutherland*

john-m-s@xtra.co.nz

MACDONALD	SCOTLAND	Argyl Glencoe	pre1820
MACLENNAN	SCOTLAND	Ross & Cromarty Contin	pre1825
MAIHAROA	NEW ZEALAND	Sth Canterbury	1860-
MALLEY	IRELAND	Galway	1840
MARK	SCOTLAND	Edinburgh Musselburgh	1775-1875
MARSHALL	AUSTRALIA	Victoria Dunolly	All
MARSHALL	ENGLAND	London/Stepney	All
MARSHALL	SCOTLAND	Durness Rhifail	pre1860
MASON	ENGLAND	Middlesex Camden	All
MASON	ENGLAND	Suffolk	All
MATSON	ENGLAND	Nth Riding, York Lastingham	1700-1800
MATSON	GUERNSEY	Jersey	1900
MATTHEWS	ENGLAND	Durham Port Clarence	1864-1880
MATTHEWS	SCOTLAND	Angus Dundee	1885-1940
MATTHEWS	NTH IRELAND	Tyrone Eglish	1860s
MAYBURY	WALES	Monmouthshire	All
McCALL	NTH IRELAND	Tyrone	1860s
MCDADE	AUSTRALIA	New South Wales Mudgee	c1848
MCDADE	NEW ZEALAND		All
MCDALD	AUSTRALIA	New South Wales Mudgee	c1848
MCDALD	NEW ZEALAND		All
McDONALD	SCOTLAND	Perth	abt 1843
McINTOSH	SCOTLAND	Nairn Nairn	abt 1717
MCINTYRE	SCOTLAND	Perthshire Blair Drummond	pre1870
McJENNETT	SCOTLAND	Ayrshire Dalrymple	pre1870
McLEAN	SCOTLAND	Banff Rothiemay	abt 1770
McLEAN	SCOTLAND	Isle of Bute	1793
MCMILLAN	SCOTLAND	West Lothian Linlithgow	1800s
MCMILLAN	SCOTLAND	West Lothian Whitburn	1800s
McSTAY	IRELAND	Armagh Lochgilli	abt 1850
McVEIGH	NEW ZEALAND	Canterbury Lincoln/Southbridge	1860
MENDELSON	LITHUANIA		pre1855
MENDELSON	NEW ZEALAND	Sth Canterbury Temuka	1865-1920
METZ	NEW ZEALAND	Sth Canterbury Timaru	1880-1920
MICKELSON	FINLAND	Somero	1800+
MICKELSON	NEW ZEALAND	Otago Dunedin	1870+
MILLER	SCOTLAND	Roxburghshire Cavers	All
MILLER	SCOTLAND	Roxburghshire Teviothead	All

**Are your genealogical interests reflected in this list? If not, contact John Sutherland to be included. Take the opportunity to make contact with family members.**



# Library report

*from Teresa Scott*

*South Canterbury Genealogy Society Inc - recent accessions include:*

*Newsletters 2024:*

Cambridge – September; October  
Canterbury Genealogy Society – September  
Dunedin – September-October  
Feilding – August  
Hawke's Bay – August  
Hibiscus Coast – September  
Hutt Valley – September; October  
Kilbirnie – September; October  
Matamata – September  
Mosgiel – August/September  
Nelson – August; September  
New Plymouth Genealogy – September; October  
Oamaru – August; September (Waitaki)  
Otaki Family History Society – August; September  
Palmerston North – August; September  
Papakura – September; October  
Porirua – September; October  
Riccarton – September  
South Canterbury Genealogy Society – July-August  
South Waikato – October  
Wellington – August; September  
Whanganui – September



***Please send request for forwarding to Teresa.***

Cricklewood (Tales of the Connor Breed . . .) – Doreen Lange (1982) [FH51]  
Crerar Family History (Family History Notes By Mike Fitzgerald, May 2024) [FH52]

*Never stop Learning*  
**family  
history**  
**help and resources at your library**



# Local contacts

## SC Genealogy - Office bearers

Convener: Liz Shea 03 684 7790 Branch Contact sheafamily@farmside.co.nz

Minute secretary: Lesley Tennent 03 612 6759

Treasurer: Carolyn Johnston 03 684 5709

Committee: Teresa Scott 03 688 9034 Library

Lois Shears 03 688 1655 School Rolls

Clare Palliser 03 688 0896

Hilary Coles 03 615 7195

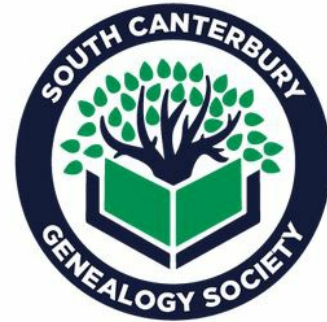
Lois White 03 684 4173

Dave Jack 021 770 000

Carol Bell 03 684 7733 Newsletter carobel49@gmail.com

Off committee: John Sutherland Members Interests [john-m-s@xtra.co.nz](mailto:john-m-s@xtra.co.nz)

Janette Clarke Museum roster [jansuscar@gmail.com](mailto:jansuscar@gmail.com)



Meetings are held on the second Tuesday of the month at 7.30pm at SC Museum.

Research help is also available at the Library on Wednesdays 9am - 12pm and at the museum every Sunday 1.30pm - 4pm. The group library is available at the museum whenever the research room is open - Tuesday to Friday and Sunday 1.30pm to 4pm. Books can be borrowed on Sundays but must be signed out by the librarian or a Sunday volunteer.

A working group meets on Wednesday mornings at the Library and Friday mornings at the museum to transcribe various historical documents. Can you help? Contact Lois on 688-1655

The "Writing up your Family History" group meets Wednesday 1-3pm. If you would like help getting your research to the final stage contact Carol at [carobel49@gmail.com](mailto:carobel49@gmail.com) or 027 3399447.



Ashbury  
Camping  
Ground